

*Sew & Sew*

by **Chloe's Closet**



**JUNE**  
**2016**  
**DELIVERY**



**B**y popular demand, this vintage-inspired, sewing-themed collection was made with love and a little bit of creative sass. The mixture of tiny floral prints and sewing patterns, big polka dots and text create a retro-modern patchwork that is sure to keep you busy stitching.

[modafabrics.com](http://modafabrics.com)



*moda*





№ 33180 11\*  
Patchwork - Fruity  
reduced to show full repeat



№ 33182 17\*  
Fruity



№ 33184 12  
Orange Fizz



№ 33183 29  
Orange Fizz Whip Cream



№ 33185 12\*  
Orange Fizz



№ 33182 12  
Orange Fizz



№ 33186 12  
Orange Fizz



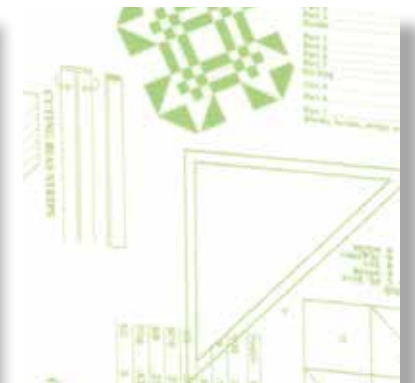
№ 33186 14\*  
Limeade



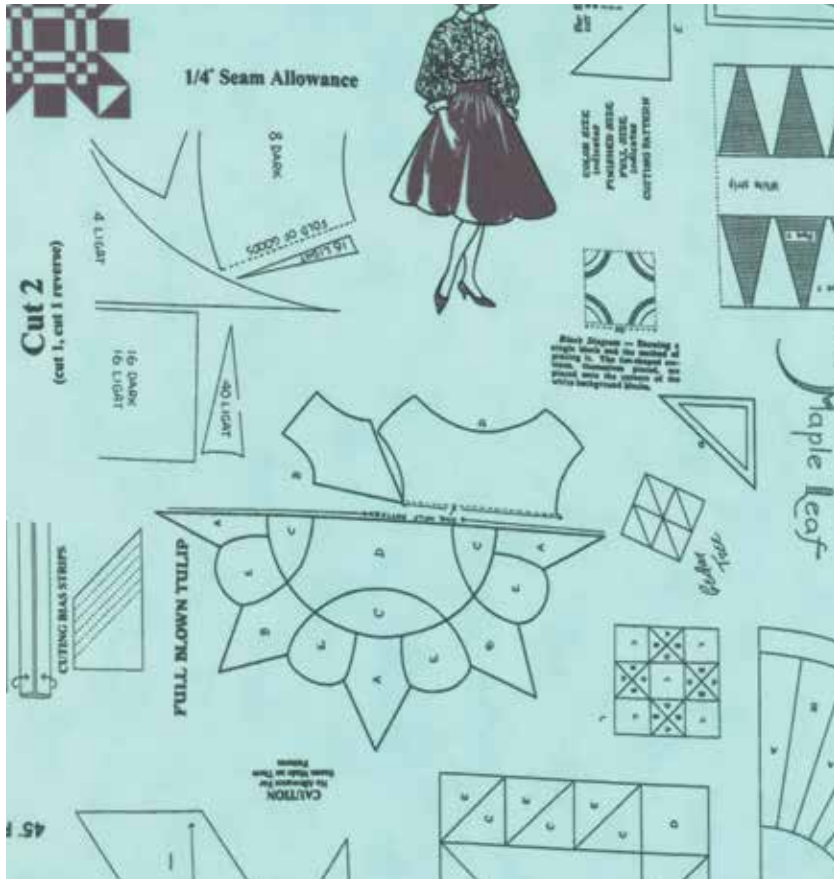
№ 33182 14  
Limeade



№ 33185 14\*  
Limeade



№ 33181 24  
Limeade Whip Cream



№ 33181 15\*  
Berrylicious



№ 33183 15  
Berrylicious



№ 33185 17  
Blue Raspberry



№ 33186 15  
Berrylicious



№ 33186 25\*  
Blue Raspberry



№ 33184 15\*  
Berrylicious



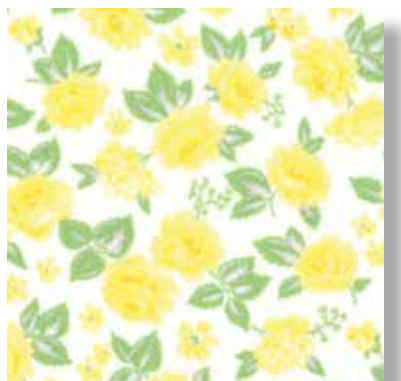
№ 33182 15  
Blue Raspberry



№ 33183 17\*  
Berrylicious Whip Cream



№ 33184 16\*  
Cloudy Sky



№ 33183 28  
Lemon Drop Whip Cream



№ 33186 13\*  
Lemon Drop



№ 33184 13\*  
Lemon Drop



№ 33186 17  
Whip Cream

# Double Chocolate Cherry Cookies

## INGREDIENTS:

- 1 CUP BUTTER, SOFTENED
- 1 1/3 CUPS GRANULATED SUGAR
- 2/3 CUP PACKED BROWN SUGAR
- 1 TEASPOON BAKING SODA
- 1/4 TEASPOON SALT
- 2 EGGS
- 1 1/2 TEASPOONS VANILLA
- 3 CUPS ALL-PURPOSE FLOUR
- 2 CUPS DRIED TART CHERRIES
- 1 1/2 CUPS CHOPPED WALNUTS
- 1 1/2 CUPS SEMISWEET CHOCOLATE PIECES
- 1 CUP WHITE BAKING PIECES

IN A LARGE MIXING BOWL, BEAT BUTTER WITH AN ELECTRIC MIXER 30 SECONDS. ADD SUGARS, SODA AND SALT. BEAT UNTIL COMBINED.

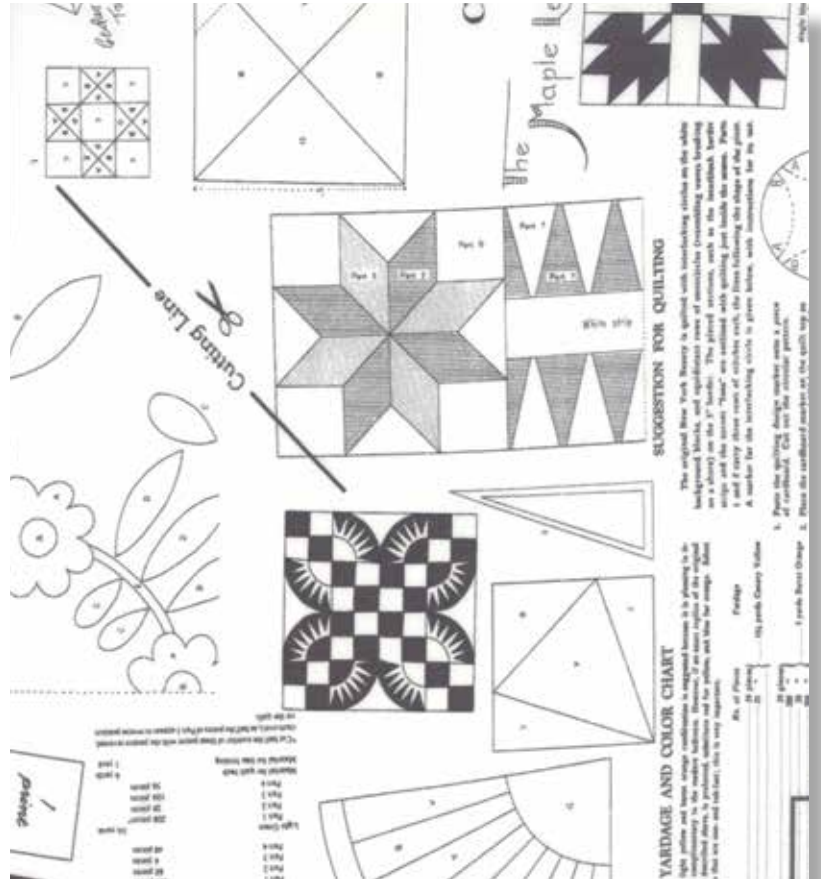
BEAT IN THE EGGS AND VANILLA UNTIL MIXTURE IS SMOOTH. USING THE MIXER, BEAT IN AS MUCH OF THE FLOUR AS YOU CAN. STIR IN REMAINING FLOUR BY HAND. STIR IN CHERRIES, NUTS, CHOCOLATE AND WHITE BAKING PIECES. (DOUGH WILL BE STIFF.)

DROP ROUNDED TABLESPOONS 2 INCHES APART ON UNGREASED COOKIE SHEETS. BAKE IN A 325 DEGREES OVEN 14 TO 16 MINUTES OR UNTIL GOLDEN. COOL ABOUT 2 MINUTES ON COOKIE SHEETS, THEN TRANSFER TO WIRE RACKS.

the  
**Cookie**  
exchange

RECIPES FROM YOUR FAVORITE DESIGNERS

109



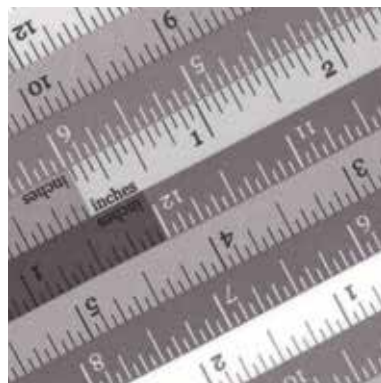
No 33181 26\*  
Licorice Whip Cream



No 33185 16  
Cloudy Sky



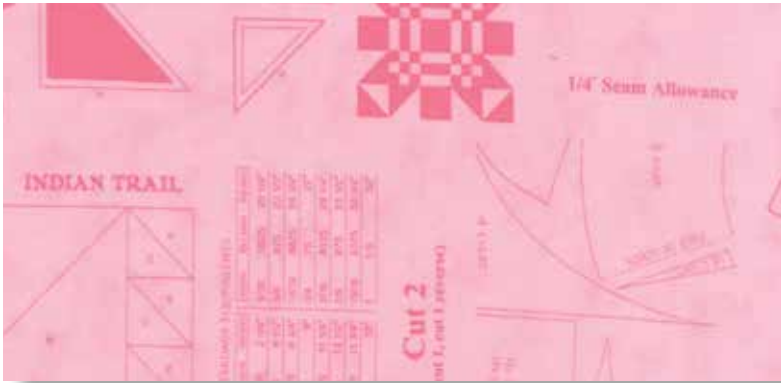
No 33186 16\*  
Cloudy Sky



No 33182 16\*  
Cloudy Sky



No 33186 26  
Licorice



No 33181 11  
Pink Lemonade



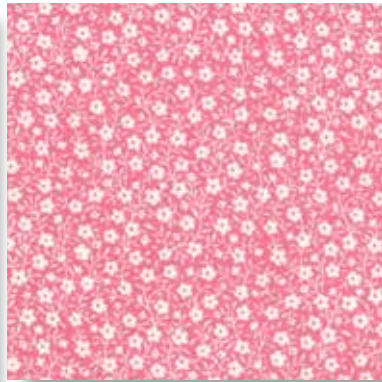
No 33185 11\*  
Pink Lemonade



No 33186 11  
Pink Lemonade



No 33184 11  
Pink Lemonade



No 33186 21  
Strawberry



No 33183 11\*  
Strawberry



No 33183 27\*  
Strawberry Whip Cream



*Quilt Pattern*  
**PS33080**  
Sew and Sew  
Size: 78" x 78"  
LC Friendly



**FRIVOLS®**  
Sew and Sew  
Frivol 11  
Shine  
Size: 55" x 55"

33180

Asst.  
15

Asst.  
10

Low Cal  
10

AB

F8

JR

LC

MC

PP

PS

•36 Prints  
JR's, LC's, MC's, and PP's include two each of 33086 11, 12, 15 and 16.

•100% Premium Cotton

Delivery: June, 2016